

Dream AIR™

MICROCLIMATE MATTRESS

Convertible Alternating Pressure with Microclimate Management

Dream AIR™ Microclimate Mattress is an advanced pressure redistribution support surface that provides flexible therapy to help you meet the wound care needs of your patient. Used without a control unit, Dream AIR™ provides pressure redistribution through an open, self-adjusting air cell system. Easily convert the surface with an optional control unit to provide microclimate management and alternating pressure.

Dream AIR™

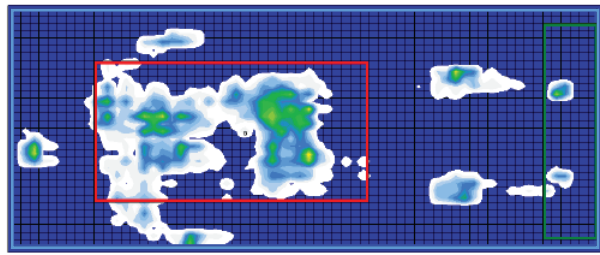
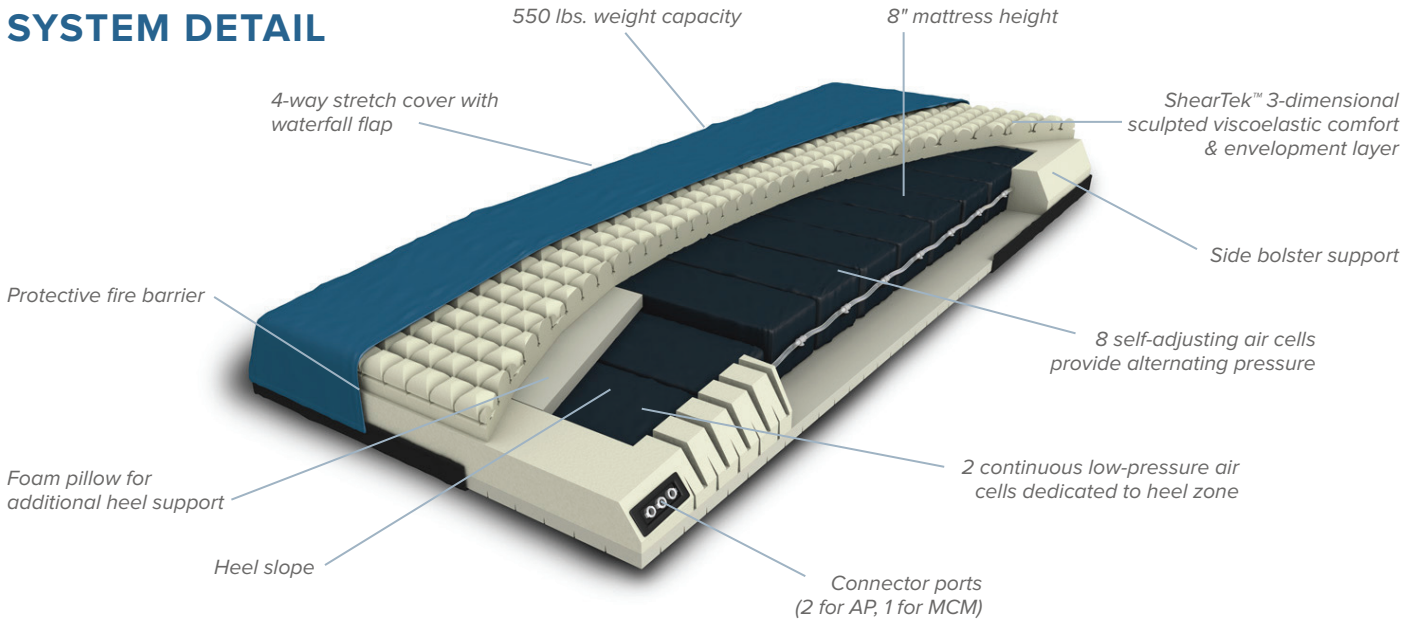
MICROCLIMATE MATTRESS

- Advanced pressure redistribution mattress can be used with or without control unit
- Open air system with self-adjusting air cells
- 4-way stretch cover and 3-dimensional sculpted envelopment layer provide optimal patient comfort
- 10 self-adjusting air cells provide optimal pressure redistribution with dedicated air cells for the heels
- Accommodates patients weighing up to 550 lbs. with control unit
- Optional control unit provides microclimate management and alternating pressure with quiet operation - no noisy, constant adjustments of an all air mattress system

Dream AIR™ — PROTECTING PATIENTS WITH WOUND CARE THAT EVOLVES TO MEET THEIR NEEDS



SYSTEM DETAIL



Male | 200 Lbs | Supine | Vista High Resolution FSA

	Surface ¹	Trunk ²	Heel ³
Sensing Area (In ²)	505.46	365.05	11.23
Coefficient Of Variation (%)	83.70	80.63	76.08
Average Pressure (MmHg)	8.79	9.24	11.51
Maximum Pressure (MmHg)	36.48	36.48	32.17
Regional Distribution (%)	100.00	75.89	2.91

¹ Sensing area in blue box to the left
² Sensing area in red box to the left
³ Sensing area in green box to the left

TECHNICAL SPECIFICATIONS

MATTRESS

WEIGHT LIMIT WITH CONTROL UNIT 550 LBS.
 MATTRESS WARRANTY 3 YRS, NON PRORATED
 COVER WARRANTY 1 YR, NON PRORATED
 FLAMMABILITY CAL 117, CAL TB129, CPSC
 16CFR1633, BOSTON 1X-11

OPTIONAL CONTROL UNIT

AIRFLOW 10 LT./MIN.
 AP CYCLE TIME 12 MIN.
 NOISE LEVEL 35DBA
 WARRANTY 1 YR
 POWER SUPPLY 120-127 VAC, 60 HZ
 OPERATING TEMPERATURE RANGE 32° - 104° F
 RELATIVE HUMIDITY RANGE 30-75%