

Dream AIR™

CONVERTIBLE MATTRESS

Alternating Pressure with Low-Air-Loss Microclimate Management

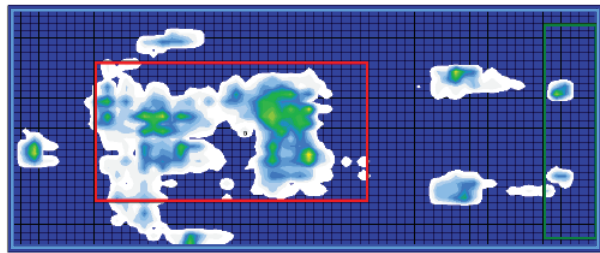
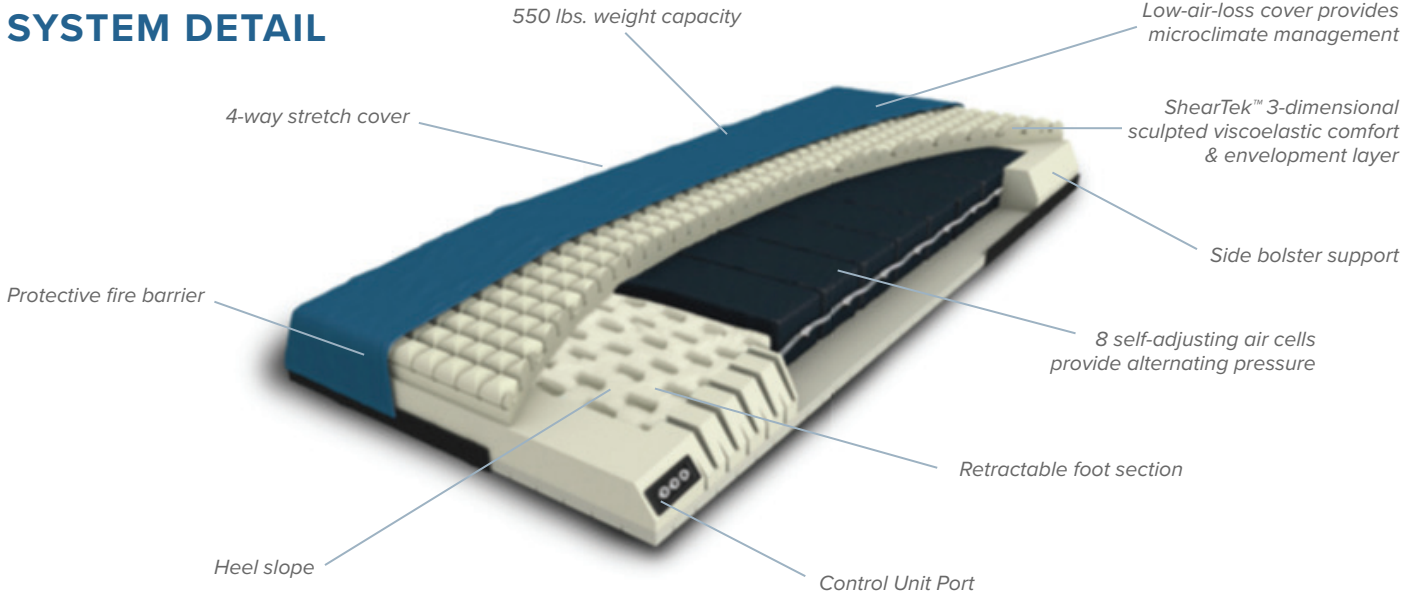
The Hercules Dream AIR™ Mattress is an advanced pressure redistribution support surface that provides flexible therapy to help you meet the wound care needs of your patient. Used without a control unit, Dream AIR™ provides pressure redistribution through an open, self-adjusting air cell system. The surface can easily be converted using the optional control unit to provide low air-loss microclimate management and alternating pressure.

- **Advanced Pressure Redistribution Mattress** can be used with or without control unit
- **Control Unit** with low-air-loss technology provides microclimate management and alternating pressure with quiet operation and simple adjustments
- **8 Self-Adjusting Air Cells** redistribute pressure to provide advanced pressure relief for high-risk areas including head, shoulders, hips, sacrum, legs and heels
- **4-way Breathable Stretch Cover** has a high Moisture Vapor Transmission (MVT) design that promotes a dryer, cooler skin environment that stretches in all directions to provide optimal patient envelopment
- **Retractable Foot Section** naturally reduces pressure on the heels while also accommodating the retractability of foot sections found on many bed frames today
- **Patient Weight Support** up to 550 lbs.

Dream AIR™ — PROTECTING PATIENTS WITH WOUND CARE THAT EVOLVES TO MEET THEIR NEEDS



SYSTEM DETAIL



Male | 200 Lbs | Supine | Vista High Resolution FSA

	Surface ¹	Trunk ²	Heel ³
Sensing Area (In ²)	505.46	365.05	11.23
Coefficient Of Variation (%)	83.70	80.63	76.08
Average Pressure (MmHg)	8.79	9.24	11.51
Maximum Pressure (MmHg)	36.48	36.48	32.17
Regional Distribution (%)	100.00	75.89	2.91

¹ Sensing area in blue box to the left
² Sensing area in red box to the left
³ Sensing area in green box to the left

TECHNICAL SPECIFICATIONS

MATTRESS

MATTRESS SIZE 35" WIDTH X 84" LENGTH
 WEIGHT LIMIT 550 LBS.
 FLAMMABILITY CAL 117, CAL TB129, CPSC 16CFR1633, BOSTON 1X-11

CONTROL UNIT

ALTERNATING PRESSURE INTERVAL TIME 5 MIN.
 NOISE LEVEL 35DBA
 POWER SUPPLY 120-127 VAC, 60 HZ